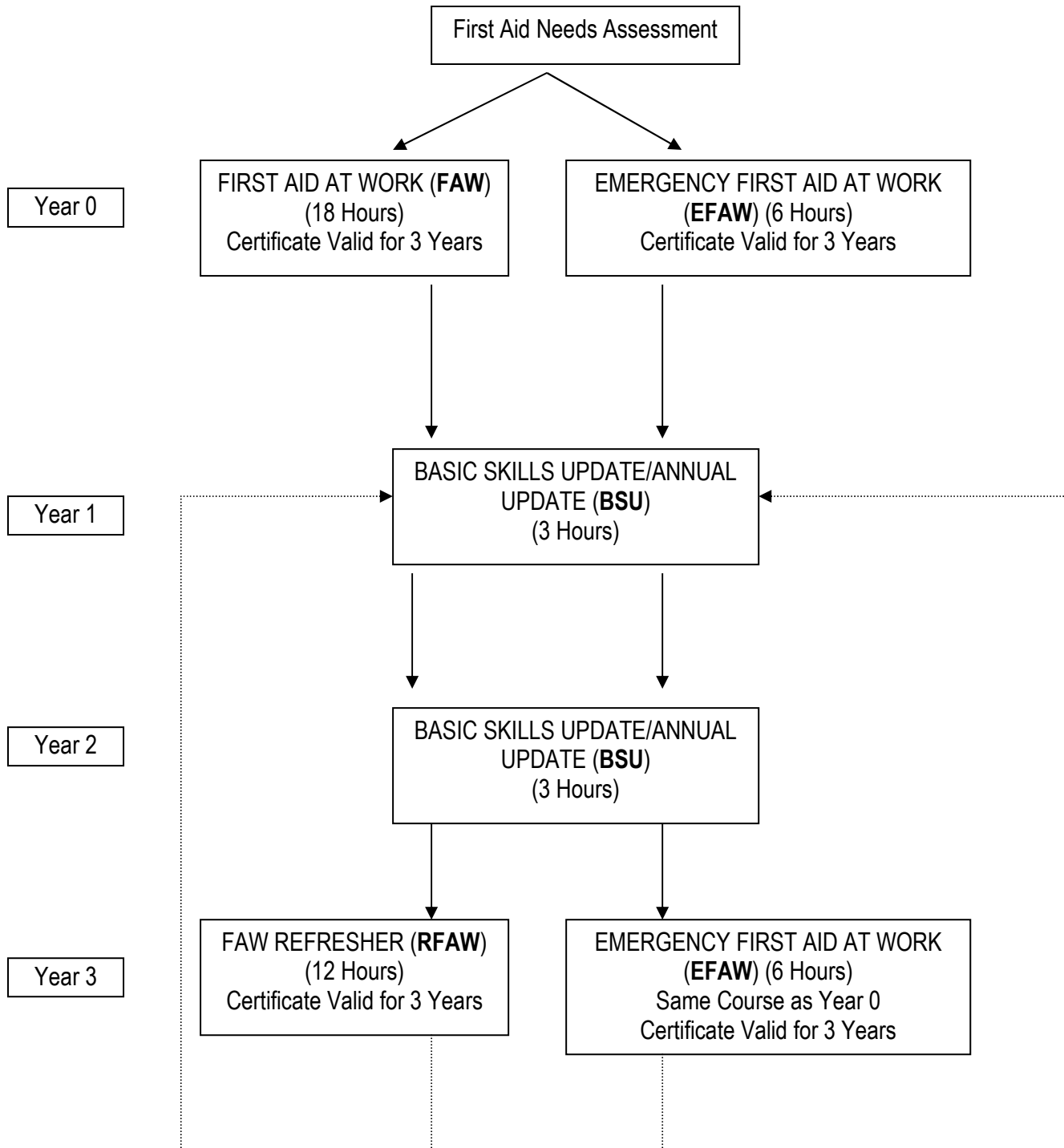


Comparison of BSU, FAW and EFAW Syllabus

What Emergencies are First Aiders Trained to Deal With?			
EFAW = 6 Hour Emergency First Aid at Work (refreshed after 3yrs) FAW = 18 Hour First Aid at Work (refreshed after 3 yrs) BSU = 3 hour update course to be completed annually	BSU	EFAW	FAW
Acting safely, promptly and effectively in an emergency	✓	✓	✓
Cardio Pulmonary Resuscitation (CPR) (incl AED Awareness)	✓	✓	✓
Treating an unconscious casualty (including seizure)	✓	✓	✓
Choking		✓	✓
Wounds and bleeding	✓	✓	✓
Shock	✓	✓	✓
Minor injuries		✓	✓
Preventing cross infection, recording incidents and actions and the use of available equipment		✓	✓
Fractures			✓
Sprains and strains			✓
Spinal injuries			✓
Chest injuries			✓
Severe burns and scalds			✓
Eye injuries			✓
Poisoning			✓
Anaphylaxis			✓
Heart attack			✓
Stroke			✓
Epilepsy			✓
Asthma			✓
Diabetes			✓
Some subjects are not covered on the EFAW course and if any of these injuries or illnesses could occur a full FAW course should be provided.			

First Aid Courses to Complete Over an Initial Three Year Period Then Subsequent Years



Bostock
First Aid supplies and training

63 Garfield Street, Bedford, MK41 7RZ
Tel 01234 356980 Fax 01234 340066

email sales@bostockhealthcare.com www.bostockhealthcare.com